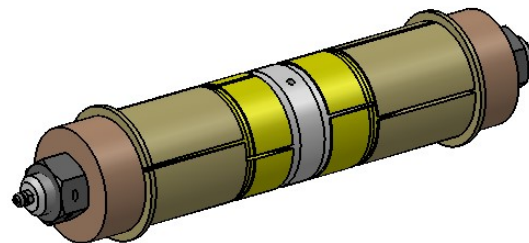
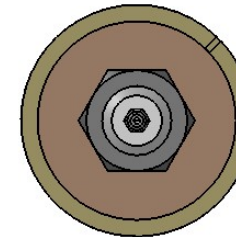
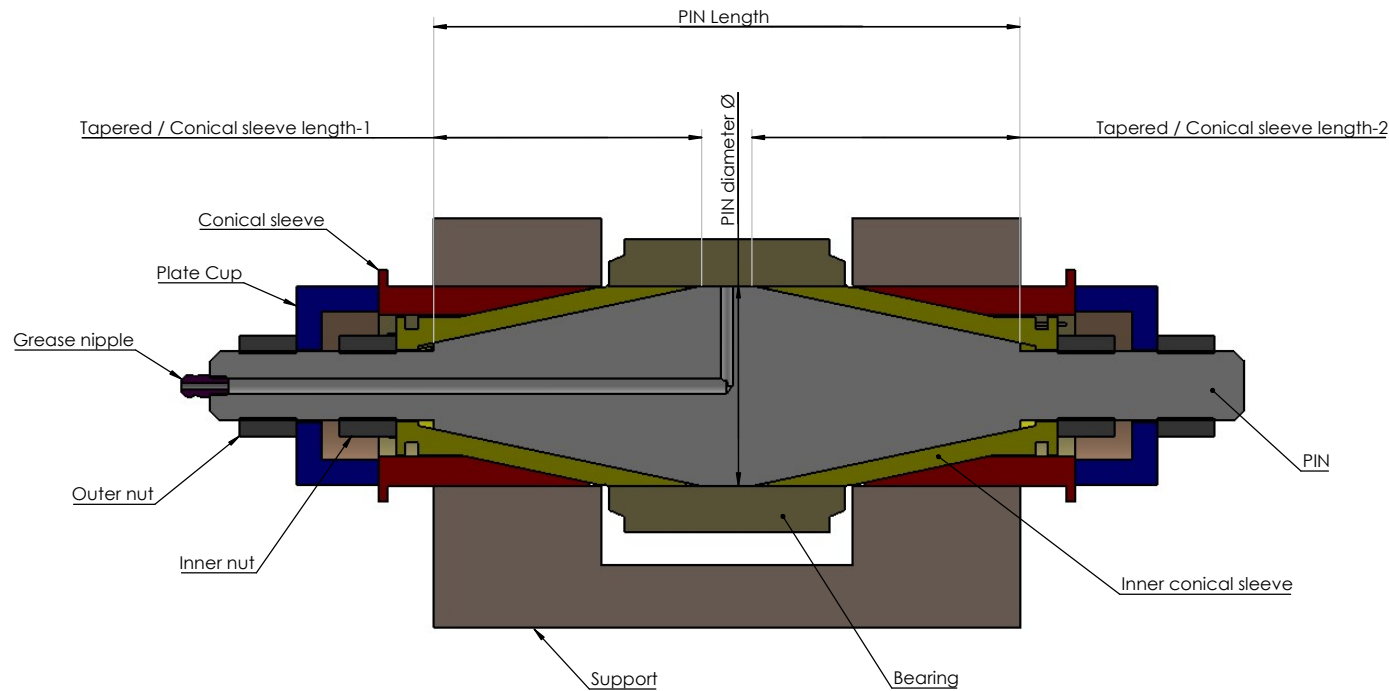


REVISIONS TABLE			
REV.	DESCRIPTION	DATE	APPROVED
A	Drawing traceability	16.08.2004	AAg
B	Ø25-500 was Ø40-300	16.04.2013	TorG
C	Updates for DNV Approval 2017	01.08.2017	ØK



Detailed explanation of a bondura® assembly, as per Bondura Technology's Material Traceability List

Example: bondura DUAL 36.063,5,0186.L-85.85

bondura® type: DUAL 36
 PIN diameter: Ø63,5 mm
 PIN length: 186 mm
 lubrication: L= single lubrication
 D= double lubrication
 U= without lubrication

Tapered / Conical sleeve length-1: 85 mm
 Tapered / Conical sleeve length-2: 85 mm

The bondura® pivot pin is a patented product and is thus protected under patent legislations and product rights.

Date: 18.05.1999	Drawn by: Tor	App. by: ØK	Project used:	Size: A2
Product Description: bondura DUAL 36 Ø25-Ø500				Sheet: 1 of 1
GENERAL ARRANGEMENT				Revision: GA-0370
Material:	Weight: 9.18 kg	Ref. to:	Module:	Art no:
				Status: Approved



Revision: C